

# Big Hook Shelf Instructions

## Tool required:

- Standard length #2 Phillips screwdriver.

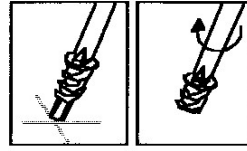
## Tools suggested:

- Tape measure.
- Level
- Drill with 1/4" bit & 1/8" bit (if on stud)

## Parts included:

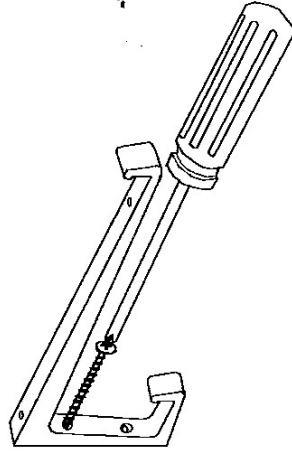
- Big Hook Brackets.
- 6"x24" or 6"x36" x 3/8" thick glass shelf.
- 4 - screws and zip-it™ wall anchors.

- Mark locations for brackets (level across & at least 1 1/2" in from edge of glass).
- Install Zip-it™ wall anchors, or if on stud, predrill 1/8" hole for screw.

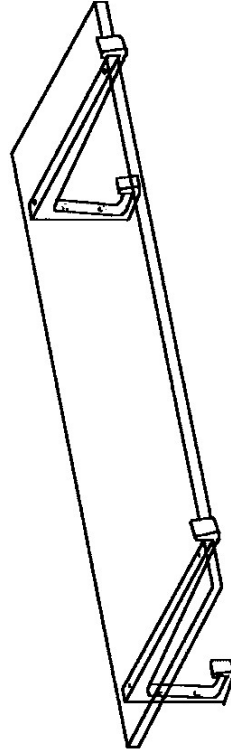


Zip-it™ wall anchor

- Make 1/4" hole.
- Push Zip It™ in until threads are reached.
- Screw in slowly until flush with wall.



- Use #2 phillips screw driver for screws supplied, screw in until tight.
- Place glass shelf on brackets with equal overhang on sides.



Questions or Comments call Expo Design (516) 674-1420 [www.expodesigninc.com](http://www.expodesigninc.com)

# Big Hook Shelf Instructions

## Tool required:

- Standard length #2 Phillips screwdriver.

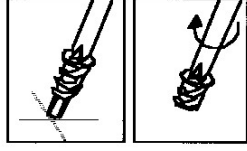
## Tools suggested:

- Tape measure.
- Level
- Drill with 1/4" bit & 1/8" bit (if on stud)

## Parts included:

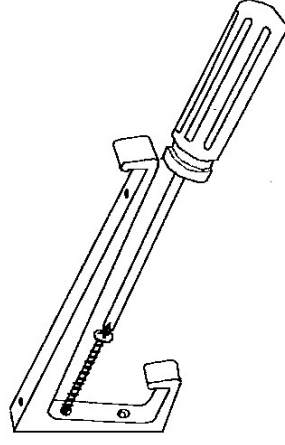
- Big Hook Brackets.
- 6"x24" or 6"x36" x 3/8" thick glass shelf.
- 4 - screws and zip-it™ wall anchors.

- Mark locations for brackets (level across & at least 1 1/2" in from edge of glass)
- Install Zip-it™ wall anchors, or if on stud, predrill 1/8" hole for screw.

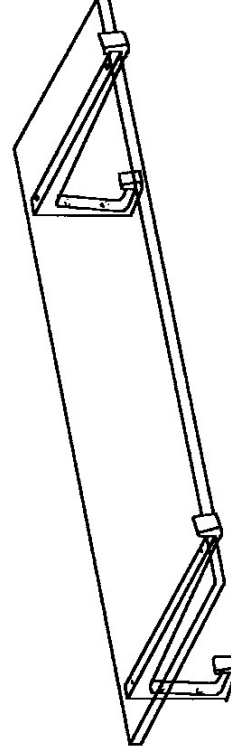


Zip-it™ wall anchor

- Make 1/4" hole.
- Push Zip It™ in until threads are reached.
- Screw in slowly until flush with wall.



- Use #2 phillips screw driver for screws supplied, screw in until tight.
- Place glass shelf on brackets with equal overhang on sides.



Questions or Comments call Expo Design (516) 674-1420 [www.expodesigninc.com](http://www.expodesigninc.com)